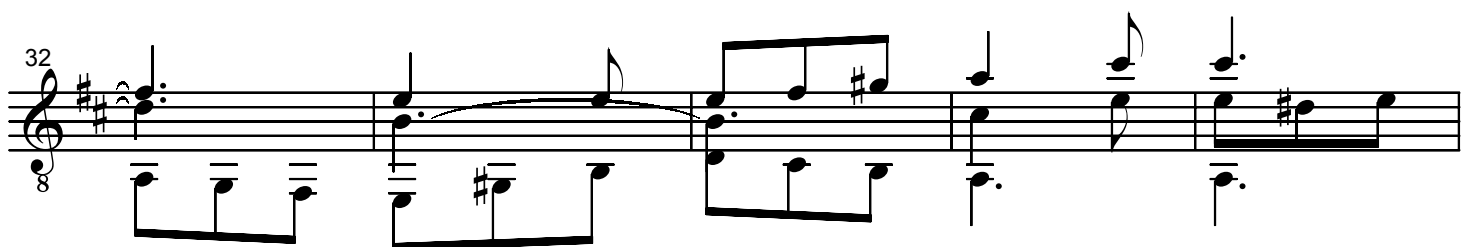
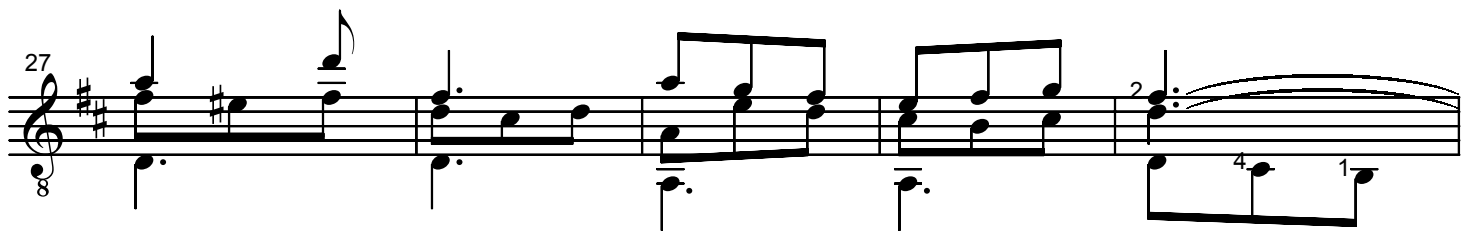
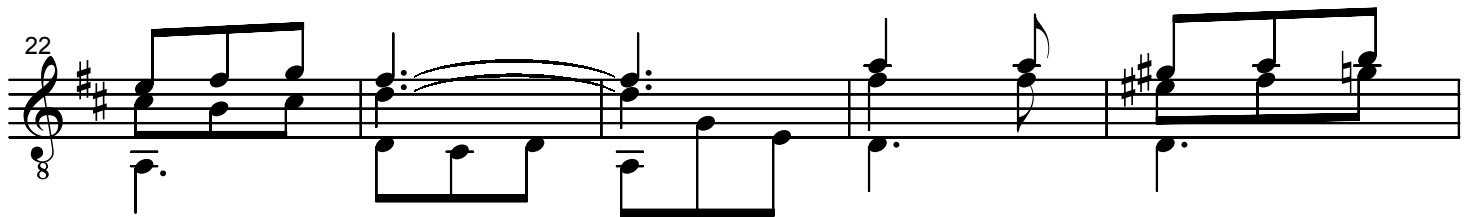
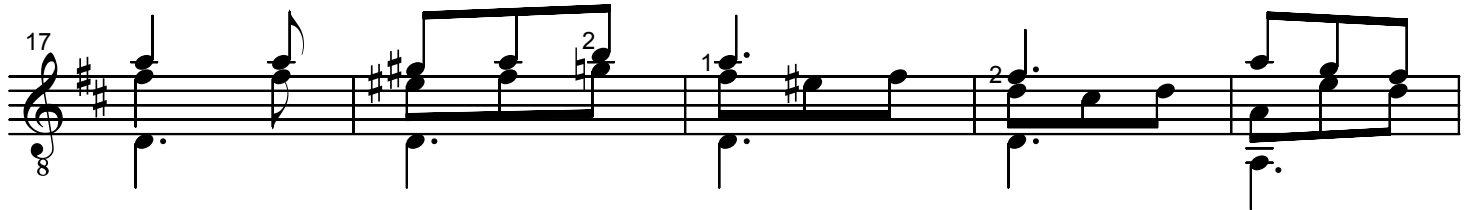
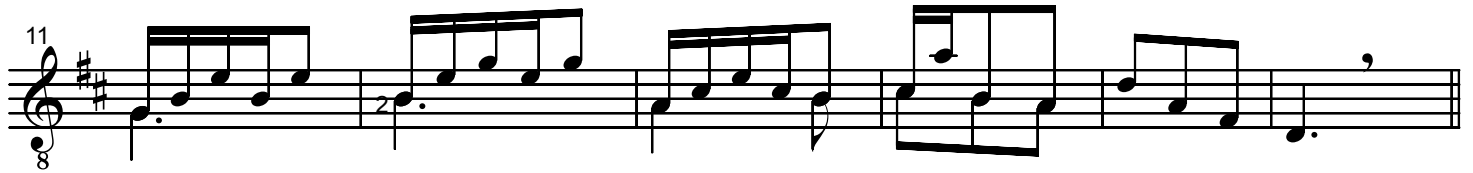
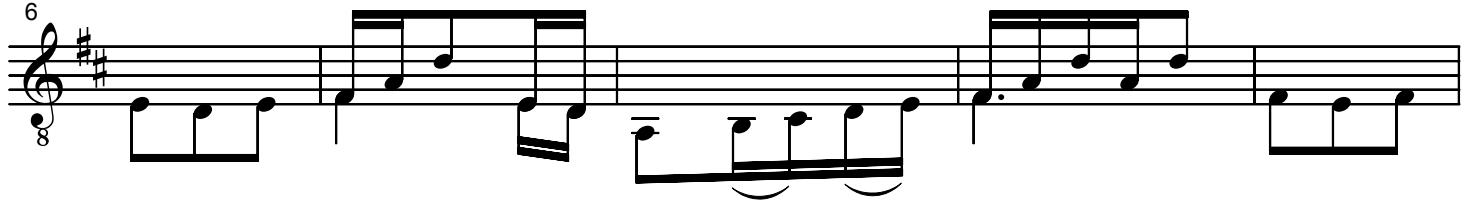
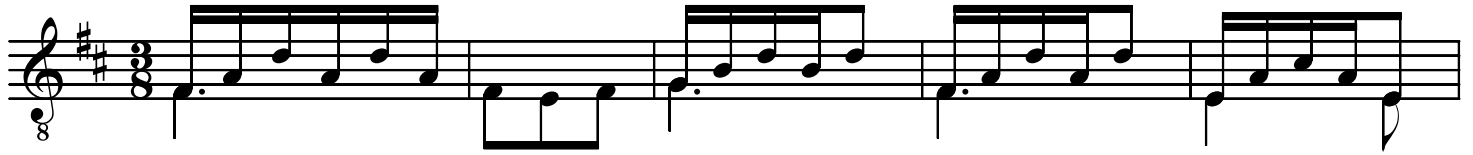


Vieni sulla barchetta

Traditional,
arranged by Jürg Hochweber



(viene sulla barchetta... 2 of 2)

37

8

4 1 1 0 1 4 4

Detailed description: This system contains measures 37 through 41. The treble clef staff features a melody with various note values and rests, including a triplet of eighth notes in measure 37. The bass clef staff provides a harmonic accompaniment with chords and single notes. Fingering numbers (4, 1, 1, 0, 1, 4, 4) are indicated above the treble staff. A double bar line is present at the end of measure 41.

42

8

Detailed description: This system contains measures 42 through 46. The treble clef staff continues the melody with eighth and sixteenth notes. The bass clef staff continues the accompaniment with chords and single notes.

47

8

Fine

Detailed description: This system contains measures 47 through 52. The treble clef staff features a melodic line with a long note in measure 47. The bass clef staff has a steady accompaniment. The word "Fine" is written below the treble staff at the end of measure 52.

53

8

Detailed description: This system contains measures 53 through 58. The treble clef staff continues the melody with eighth notes and chords. The bass clef staff continues the accompaniment with chords and single notes.

59

8

Detailed description: This system contains measures 59 through 64. The treble clef staff continues the melody with eighth notes and chords. The bass clef staff continues the accompaniment with chords and single notes.

65

8

Detailed description: This system contains measures 65 through 70. The treble clef staff continues the melody with eighth notes and chords. The bass clef staff continues the accompaniment with chords and single notes.

71

8

Detailed description: This system contains measures 71 through 75. The treble clef staff continues the melody with eighth notes and chords. The bass clef staff continues the accompaniment with chords and single notes.

76

8

D.C. al Fine

Detailed description: This system contains measures 76 through 80. The treble clef staff continues the melody with eighth notes and chords. The bass clef staff continues the accompaniment with chords and single notes. The instruction "D.C. al Fine" is written at the bottom right of the system.