

# Schwarze Augen

## Очи чёрные

Trad. Russland  
arrangiert von  
Jürg Hochweber

1 8  $\text{♩} = 120$   
Drums -----

Sopran-Flöte

Floete

Klarinette/Sax. in B

Trompete in B

Violin

Cello

Piano/Guitar/Akkordeon

Bass

Detailed description: This block contains the first eight measures of the musical score. It features ten staves: Sopran-Flöte, Floete, Klarinette/Sax. in B, Trompete in B, Violin, Cello, Piano/Guitar/Akkordeon, and Bass. The tempo is marked as quarter note = 120. The key signature has one flat (B-flat). The drum part is indicated by a dashed line. The Piano/Guitar/Akkordeon and Bass parts include chord markings: A7 and Dm.

11 8

Sop.Fl.

Fl.

B♭ Cl.

Tp

Vln.

Vc.

Akk Git Kl

Bass

Detailed description: This block contains measures 11 through 15 of the musical score. It features nine staves: Sop.Fl., Fl., B♭ Cl., Tp, Vln., Vc., Akk Git Kl, and Bass. The tempo remains quarter note = 120. The key signature has one flat. The Piano/Guitar/Akkordeon and Bass parts include chord markings: Gm, Dm, and A7.

19 <sup>8</sup>

Sop.Fl.

Fl.

B♭ Cl.

Tp

Vln.

Vc.

Akk  
Git  
Kl

Bass

*Gm* *Dm* *A7* *Dm*

*Gm* *Dm* *A7* *Dm*

*Gm* *Dm* *A7* *Dm*

27 <sup>8</sup>

Sop.Fl.

Fl.

B♭ Cl.

Tp

Vln.

Vc.

Akk  
Git  
Kl

Bass

*A7* *Dm* *A7* *Dm*

*A7* *Dm* *A7* *Dm*

*A7* *Dm* *A7* *Dm*

35 8

Sop.Fl.

Fl.

B♭ Cl.

Tp

Vln.

Vc.

Akk  
Git  
KI

Bass

43 8

Sop.Fl.

Fl.

B♭ Cl.

Tp

Vln.

Vc.

Akk  
Git  
KI

Bass

51 8

Sop. Fl.

Fl.

B♭ Cl.

Tp

Vln.

Vc.

Akk  
Git  
KI

Bass

59 8

Sop. Fl.

Fl.

B♭ Cl.

Tp

Vln.

Vc.

Akk  
Git  
KI

Bass

67 8

Sop. Fl.

Fl.

B♭ Cl.

Tp

Vln.

Vc.

Akk  
Git  
KI

Bass

75 8

Sop. Fl.

Fl.

B♭ Cl.

Tp

Vln.

Vc.

Akk  
Git  
KI

Bass

83 8

Sop.Fl.

Fl.

B♭ Cl.

Tp

Vln.

Vc.

Akk  
Git  
KI

Bass

F F7 Gm C7 F

91 8

Sop.Fl.

Fl.

B♭ Cl.

Tp

Vln.

Vc.

Akk  
Git  
KI

Bass

B♭m F C7 Fm

$\text{♪} = \text{♪}^3$



115<sup>g</sup>

Sop.Fl.

Fl.

B♭ Cl.

Tp

Vln.

Vc.

Akk  
Git  
Kl

Bass

123<sup>g</sup>

Sop.Fl.

Fl.

B♭ Cl.

Tp

Vln.

Vc.

Akk  
Git  
Kl

Bass



131<sup>8</sup> *Drums* *accelerando* ♩ = 140

Sop.Fl.

Fl. 131 A7 *Drums* Dm *accelerando* ♩ = 140

B♭ Cl. 131 *Drums* *accelerando* ♩ = 140

Tp 131 *Drums* *accelerando* ♩ = 140

Vln. 131 *Drums* *accelerando* ♩ = 140

Vc. 131 *Drums* *accelerando* ♩ = 140

Akk 131 A7 *Drums* Dm *accelerando* ♩ = 140

Git KI

Bass 131 A7 *Drums* Dm *accelerando* ♩ = 140

139<sup>8</sup>

Sop.Fl.

Fl. 139 A7 Dm A7 Dm Gm Dm A7 Dm

B♭ Cl. 139

Tp 139

Vln. 139

Vc. 139

Akk 139 A7 Dm A7 Dm Gm Dm A7 Dm

Git KI

Bass 139 A7 Dm A7 Dm Gm Dm A7 Dm

147<sup>8</sup>

Sop.Fl.

Fl.

147

B♭ Cl.

147

Tp

147

Vln.

Vc.

147

Akk  
Git  
KI

147 Gm Dm A7 Dm

Bass

147 Gm Dm A7 Dm

Detailed description: This is a page of a musical score for a chamber ensemble. It features eight staves: Sopranino Flute (Sop.Fl.), Flute (Fl.), B♭ Clarinet (B♭ Cl.), Trumpet (Tp), Violin (Vln.), Viola (Vc.), Acoustic Guitar (Akk Git KI), and Bass. The score is in 4/4 time and the key signature has one flat (B-flat). The first measure is marked with a rehearsal mark '147' and a superscripted '8'. The Soprano Flute and Flute parts play a melodic line starting on G4. The B♭ Clarinet and Trumpet parts play a rhythmic accompaniment. The Violin and Viola parts play a similar melodic line. The Acoustic Guitar and Bass parts provide harmonic support with chords and a bass line. The guitar part shows chords Gm, Dm, A7, and Dm. The bass part shows chords Gm, Dm, A7, and Dm. The score is written in a clean, professional style with clear notation and a well-organized layout.

# Schwarze Augen

## Очи чёрные

Trad. Russland  
arrangiert von  
Jürg Hochweber

1 8  $\text{♩} = 120$   
*Drums* - - - ,

Sopran-Flöte

11 8

Sop.Fl.

19 8

Sop.Fl.

27 8

Sop.Fl.

35 8

Sop.Fl.

43 8

Sop.Fl.

51 8

Sop.Fl.

59 8

Sop.Fl.

67 8

Sop.Fl.

75 8  
Sop.Fl.

83 8  
Sop.Fl.

91 8  
Sop.Fl.

99 8  
Sop.Fl.

107 8  
Sop.Fl.

115 8  
Sop.Fl.

123 8  
Sop.Fl.

131 8  
Sop.Fl. *Drums* *accelerando*

139 8  
Sop.Fl.

147 8  
Sop.Fl.

# Schwarze Augen

## Очи чёрные

Trad. Russland  
arrangiert von  
Jürg Hochweber

1  $\text{♩} = 120$   
*Drums - 1*

Floete

11 Gm Dm A7 Dm

19  $\text{♩} = \text{♩} \text{ } ^3$

27

35

43 Gm Dm A7 Dm *f*

51 *mf*

59 Gm Dm A7 *mf*

67  $\text{♩} = \text{♩}$

75 F B<sup>b</sup> G7 E7 Am C7  
Fl.

83 F F7 Gm C7 F  
Fl.

91 B<sup>b</sup>m F C7 Fm =   
Fl.

99 E<sup>b</sup>7   
Fl.

107  
Fl.

115 Dm  
Fl.

123 Gm Dm  
Fl.

131 A7 *Drums* Dm *accelerando* =   
Fl.

139 A7 Dm A7 Dm Gm Dm A7 Dm  
Fl.

147  
Fl.

1  $\text{♩} = 120$   
*Drums -*

Trompete in B

11

Tp

19

Tp

27

Tp

35

Tp

*f* *mf*

43

Tp

51

Tp

59

Tp

67

Tp

75  
Tp

3 3 3 3

83  
Tp

91  
Tp

$\text{♪} \text{♪} = \overset{\frown}{\text{♪} \text{♪} \text{♪}}$

99  
Tp

107  
Tp

115  
Tp

123  
Tp

3 3 3 3 3 3 3 3

131  
Tp

*Drums* *accelerando* ♩ = 140

139  
Tp

147  
Tp



# Schwarze Augen

## Очи чёрные

Trad. Russland  
arrangiert von  
Jürg Hochweber

1  $\text{♩} = 120$   
*Drums -*

Klarinette/  
Sax. in B

11

B $\flat$  Cl.

19

B $\flat$  Cl.

27

B $\flat$  Cl.

35

B $\flat$  Cl.

43

B $\flat$  Cl.

51

B $\flat$  Cl.

59

B $\flat$  Cl.

67

B $\flat$  Cl.

75  
B $\flat$  Cl.

83  
B $\flat$  Cl.

91  
B $\flat$  Cl.

99  
B $\flat$  Cl.

107  
B $\flat$  Cl.

115  
B $\flat$  Cl.

123  
B $\flat$  Cl.

131  
B $\flat$  Cl. *Drums* *accelerando*  $\text{♩} = 140$

139  
B $\flat$  Cl.

147  
B $\flat$  Cl.

# Schwarze Augen

## Очи чёрные

Trad. Russland  
arrangiert von  
Jürg Hochweber

1  $\text{♩} = 120$   
*Drums -*

Violin

11

Vln.

19

Vln.

27

Vln.

*f* *mf*

35

Vln.

43

Vln.

51

Vln.

*f*

59

Vln.

*mf*

67

Vln.

75  
Vln.

83  
Vln.

91  
Vln.

99  
Vln.

107  
Vln.

115  
Vln.

123  
Vln.

131  
Vln. *Drums* *accelerando*  $\text{♩} = 140$

139  
Vln.

147  
Vln.

1 ♩ = 120  
Drums - ,

Cello



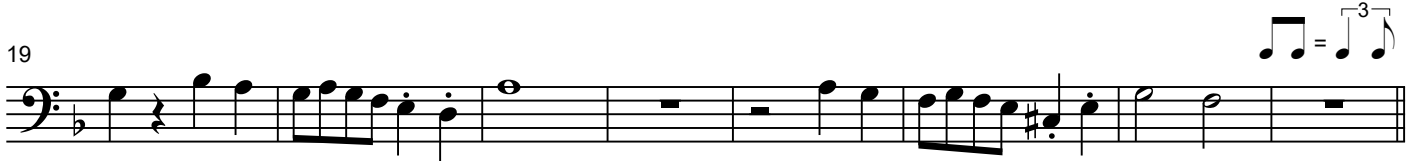
11

Vc.



19

Vc.



27

Vc.



35

Vc.



43

Vc.



51

Vc.



59

Vc.



67

Vc.



75

Vc.

Musical staff for measure 75, bass clef, key signature of one flat. The staff contains a sequence of notes: G2 (half note), G2 (half note), G2 (half note), G2 (half note), A2 (half note), B2 (half note), C3 (half note), and a whole rest.

83

Vc.

Musical staff for measure 83, bass clef, key signature of one flat. The staff contains a sequence of notes: G2 (quarter note), A2 (quarter note), B2 (quarter note), C3 (quarter note), D3 (quarter note), E3 (quarter note), F3 (quarter note), G3 (quarter note), A3 (quarter note), B3 (quarter note), C4 (quarter note), and a whole rest.

91

Vc.

Musical staff for measure 91, bass clef, key signature of one flat. The staff contains a sequence of notes: G2 (quarter note), A2 (quarter note), B2 (quarter note), C3 (quarter note), D3 (quarter note), E3 (quarter note), F3 (quarter note), G3 (quarter note), A3 (quarter note), B3 (quarter note), C4 (quarter note), and a whole rest. A triplet of eighth notes (G3, A3, B3) is shown above the staff with the notation  $\text{triple} = \text{triple}$ .

99

Vc.

Musical staff for measure 99, bass clef, key signature of one flat. The staff contains a sequence of whole rests.

107

Vc.

Musical staff for measure 107, bass clef, key signature of one flat. The staff contains a sequence of notes: G2 (quarter note), A2 (quarter note), B2 (quarter note), C3 (quarter note), D3 (quarter note), E3 (quarter note), F3 (quarter note), G3 (quarter note), A3 (quarter note), B3 (quarter note), C4 (quarter note), and a whole rest.

115

Vc.

Musical staff for measure 115, bass clef, key signature of one flat. The staff contains a sequence of notes: G2 (quarter note), A2 (quarter note), B2 (quarter note), C3 (quarter note), D3 (quarter note), E3 (quarter note), F3 (quarter note), G3 (quarter note), A3 (quarter note), B3 (quarter note), C4 (quarter note), and a whole rest.

123

Vc.

Musical staff for measure 123, bass clef, key signature of one flat. The staff contains a sequence of notes: G2 (quarter note), A2 (quarter note), B2 (quarter note), C3 (quarter note), D3 (quarter note), E3 (quarter note), F3 (quarter note), G3 (quarter note), A3 (quarter note), B3 (quarter note), C4 (quarter note), and a whole rest.

131

Vc.

*Drums* *accelerando*

Musical staff for measure 131, bass clef, key signature of one flat. The staff contains a sequence of notes: G2 (quarter note), A2 (quarter note), B2 (quarter note), C3 (quarter note), D3 (quarter note), E3 (quarter note), F3 (quarter note), G3 (quarter note), A3 (quarter note), B3 (quarter note), C4 (quarter note), and a whole rest. A triplet of eighth notes (G3, A3, B3) is shown above the staff with the notation  $\text{triple} = \text{triple}$ .

139

Vc.

Musical staff for measure 139, bass clef, key signature of one flat, 3/4 time signature. The staff contains a sequence of notes: G2 (quarter note), A2 (quarter note), B2 (quarter note), C3 (quarter note), D3 (quarter note), E3 (quarter note), F3 (quarter note), G3 (quarter note), A3 (quarter note), B3 (quarter note), C4 (quarter note), and a whole rest.

147

Vc.

Musical staff for measure 147, bass clef, key signature of one flat. The staff contains a sequence of notes: G2 (quarter note), A2 (quarter note), B2 (quarter note), C3 (quarter note), D3 (quarter note), E3 (quarter note), F3 (quarter note), G3 (quarter note), A3 (quarter note), B3 (quarter note), C4 (quarter note), and a whole rest.

# Schwarze Augen

## Очи чёрные

Trad. Russland  
arrangiert von  
Jürg Hochweber

1  $\text{♩} = 120$   
Drums - - - -

Piano/  
Guitar/  
Akkordeon



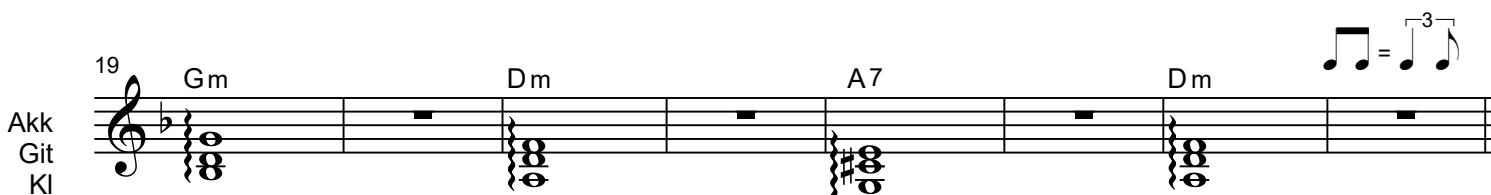
11

Akk  
Git  
KI



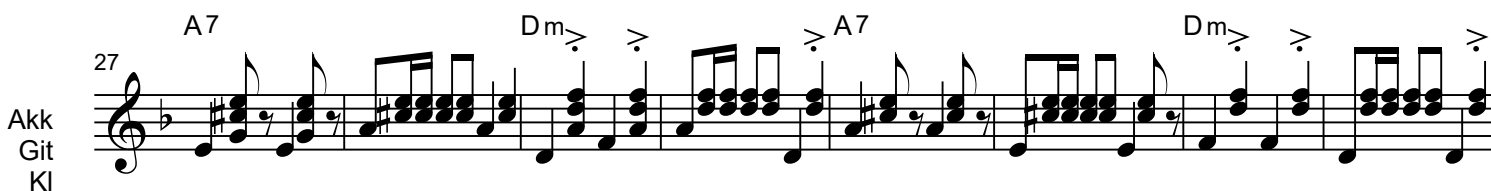
19  $\text{♩} = \text{♩}^3$

Akk  
Git  
KI



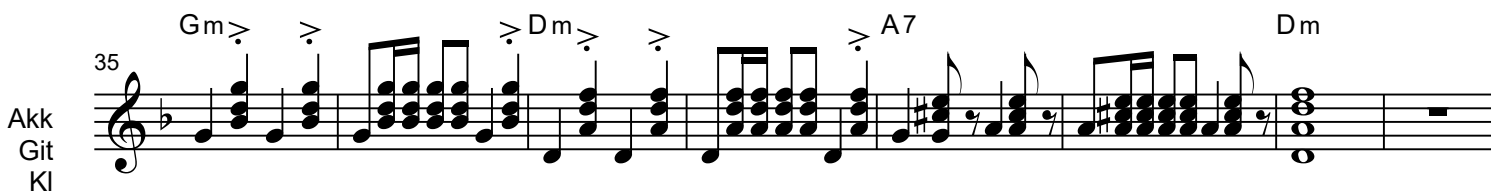
27

Akk  
Git  
KI



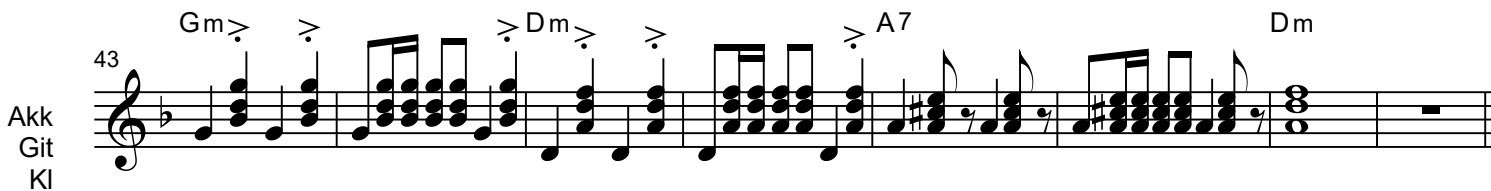
35

Akk  
Git  
KI



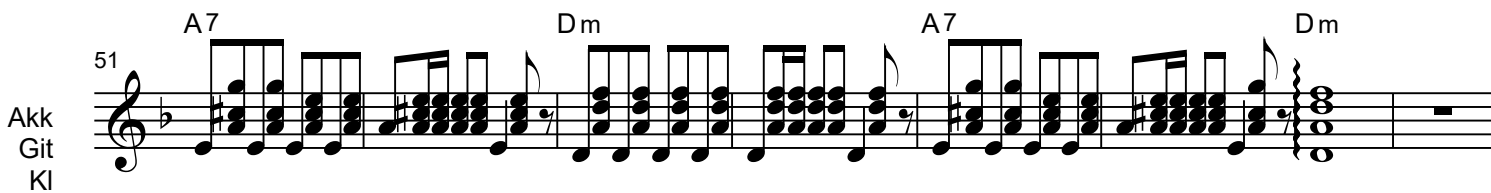
43

Akk  
Git  
KI



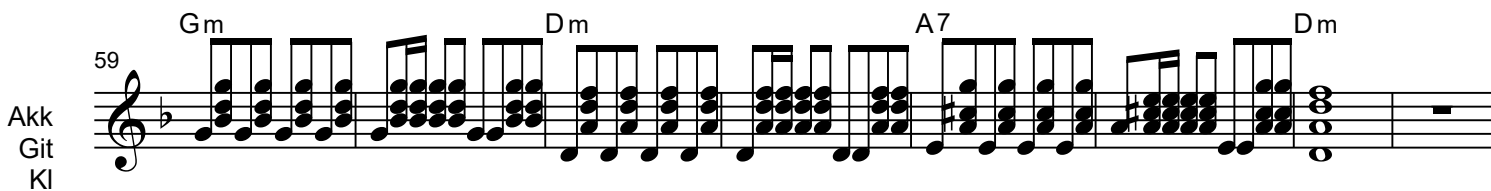
51

Akk  
Git  
KI



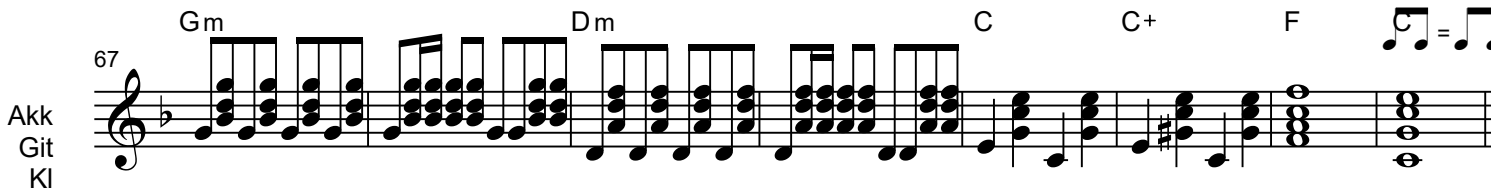
59

Akk  
Git  
KI



67  $\text{♩} = \text{♩}$

Akk  
Git  
KI



75 F B<sup>b</sup> G7 E7 Am C7

Akk  
Git  
KI

83 F F7 Gm C7 F

Akk  
Git  
KI

91 B<sup>b</sup>m F C7 Fm

Akk  
Git  
KI

99 E<sup>b</sup>7

Akk  
Git  
KI

107

Akk  
Git  
KI

115 Dm

Akk  
Git  
KI

123 Gm Dm

Akk  
Git  
KI

131 A7 Drums Dm accelerando = 140

Akk  
Git  
KI

139 A7 Dm A7 Dm Gm Dm A7 Dm

Akk  
Git  
KI

147 Gm Dm A7 Dm

Akk  
Git  
KI



# Schwarze Augen

## Очи чёрные

Trad. Russland  
arrangiert von  
Jürg Hochweber

1  $\bullet = 120$   
*Drums - ,* A7 Dm A7 Dm

Bass

11 Gm Dm A7 Dm

Bass

19 Gm Dm A7 Dm

Bass

27 A7 Dm A7 Dm

Bass

35 Gm Dm A7 Dm

Bass

43 Gm Dm A7 Dm

Bass

51 A7 Dm A7 Dm

Bass

59 Gm Dm A7 Dm

Bass

67 Gm Dm C C+ F

Bass

75 F B $\flat$  G7 E7 Am C7

Bass

Detailed description: This system shows measures 75 to 82. The bass line consists of whole notes. Measure 75 has notes F2 and C3. Measure 76 has notes F2 and C3. Measure 77 has notes B1 and F2. Measure 78 has notes B1 and F2. Measure 79 has notes G2 and D3. Measure 80 has notes G2 and D3. Measure 81 has notes E2 and B2. Measure 82 has notes E2 and B2.

83 F F7 Gm C7 F

Bass

Detailed description: This system shows measures 83 to 90. The bass line consists of quarter notes. Measure 83 has notes F2 and C3. Measure 84 has notes F2 and C3. Measure 85 has notes G2 and D3. Measure 86 has notes G2 and D3. Measure 87 has notes F2 and C3. Measure 88 has notes F2 and C3. Measure 89 has notes F2 and C3. Measure 90 has notes F2 and C3.

91 B $\flat$ m F C7 Fm

Bass

Detailed description: This system shows measures 91 to 98. The bass line consists of whole notes. Measure 91 has notes B $\flat$ 1 and F2. Measure 92 has notes B $\flat$ 1 and F2. Measure 93 has notes F2 and C3. Measure 94 has notes F2 and C3. Measure 95 has notes F2 and C3. Measure 96 has notes F2 and C3. Measure 97 has notes F2 and C3. Measure 98 has notes F2 and C3.

99 E $\flat$ 7

Bass

Detailed description: This system shows measures 99 to 106. The bass line consists of whole notes. Measure 99 has notes E $\flat$ 1 and B $\flat$ 1. Measure 100 has notes E $\flat$ 1 and B $\flat$ 1. Measure 101 has notes E $\flat$ 1 and B $\flat$ 1. Measure 102 has notes E $\flat$ 1 and B $\flat$ 1. Measure 103 has notes E $\flat$ 1 and B $\flat$ 1. Measure 104 has notes E $\flat$ 1 and B $\flat$ 1. Measure 105 has notes E $\flat$ 1 and B $\flat$ 1. Measure 106 has notes E $\flat$ 1 and B $\flat$ 1.

107

Bass

Detailed description: This system shows measures 107 to 114. The bass line consists of eighth notes. Measure 107 has notes F2, C3, F2, C3. Measure 108 has notes F2, C3, F2, C3. Measure 109 has notes F2, C3, F2, C3. Measure 110 has notes F2, C3, F2, C3. Measure 111 has notes F2, C3, F2, C3. Measure 112 has notes F2, C3, F2, C3. Measure 113 has notes F2, C3, F2, C3. Measure 114 has notes F2, C3, F2, C3.

115 Dm

Bass

Detailed description: This system shows measures 115 to 122. The bass line consists of quarter notes. Measure 115 has notes D2 and F2. Measure 116 has notes D2 and F2. Measure 117 has notes D2 and F2. Measure 118 has notes D2 and F2. Measure 119 has notes D2 and F2. Measure 120 has notes D2 and F2. Measure 121 has notes D2 and F2. Measure 122 has notes D2 and F2.

123 Gm Dm

Bass

Detailed description: This system shows measures 123 to 130. The bass line consists of whole notes. Measure 123 has notes G $\flat$ 1 and D2. Measure 124 has notes G $\flat$ 1 and D2. Measure 125 has notes G $\flat$ 1 and D2. Measure 126 has notes G $\flat$ 1 and D2. Measure 127 has notes G $\flat$ 1 and D2. Measure 128 has notes G $\flat$ 1 and D2. Measure 129 has notes G $\flat$ 1 and D2. Measure 130 has notes G $\flat$ 1 and D2.

131 A7 Dm *accelerando* = 140

Bass

Detailed description: This system shows measures 131 to 138. The bass line consists of quarter notes. Measure 131 has notes A2 and E3. Measure 132 has notes A2 and E3. Measure 133 has notes A2 and E3. Measure 134 has notes A2 and E3. Measure 135 has notes D2 and F2. Measure 136 has notes D2 and F2. Measure 137 has notes D2 and F2. Measure 138 has notes D2 and F2.

139 A7 Dm A7 Dm Gm Dm A7 Dm

Bass

Detailed description: This system shows measures 139 to 146. The bass line consists of eighth notes. Measure 139 has notes A2, E3, A2, E3. Measure 140 has notes A2, E3, A2, E3. Measure 141 has notes A2, E3, A2, E3. Measure 142 has notes A2, E3, A2, E3. Measure 143 has notes G $\flat$ 2, D3, G $\flat$ 2, D3. Measure 144 has notes G $\flat$ 2, D3, G $\flat$ 2, D3. Measure 145 has notes A2, E3, A2, E3. Measure 146 has notes A2, E3, A2, E3.

147 Gm Dm A7 Dm

Bass

Detailed description: This system shows measures 147 to 154. The bass line consists of quarter notes. Measure 147 has notes G $\flat$ 1 and D2. Measure 148 has notes G $\flat$ 1 and D2. Measure 149 has notes G $\flat$ 1 and D2. Measure 150 has notes G $\flat$ 1 and D2. Measure 151 has notes A2 and E3. Measure 152 has notes A2 and E3. Measure 153 has notes A2 and E3. Measure 154 has notes A2 and E3.

# Schwarze Augen

## Очи чёрные

Trad. Russland  
arrangiert von  
Jürg Hochweber

1  $\text{♩} = 120$   
*Drums*

Bass  
Key-16

11

Bass

19

Bass

27

Bass

35

Bass

43

Bass

51

Bass

59

Bass

67

Bass

75 F B $\flat$  G7 E7 Am C7

83 F F7 Gm C7 F

91 B $\flat$ m F C7 Fm

99 E $\flat$ 7

107

115 Dm

123 Gm Dm

131 A7 Dm *accelerando* = 140

139 A7 Dm A7 Dm Gm Dm A7 Dm

147 Gm Dm A7